

# AutoPlan®

## Manufacturing Plant Rough Planning

With AutoPlan, the process of plant rough planning is simplified considerably. This software solution allows predicting the performance of a production facility via straightforward simulation and smart evaluation procedures. Based on pre-formulated requirements, the planner graphically models a production plant using a process model. The individual process steps are transferred into production lines automatically. Based on these production lines it is possible to plan different production concepts and create a rough spatial plant layout.

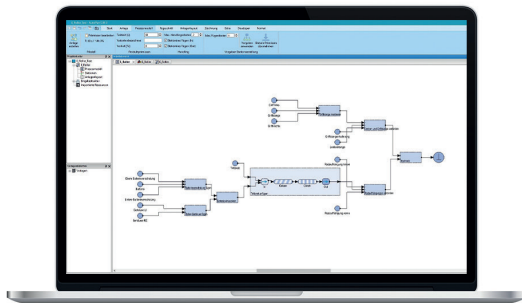
AutoPlan seamlessly integrates with existing PLM systems by obtaining input parameters from the PLM system and outputting results to the PLM system for further planning. AutoPlan thus closes the automation gap in production planning and is a valuable tool for digitalization.

### Features

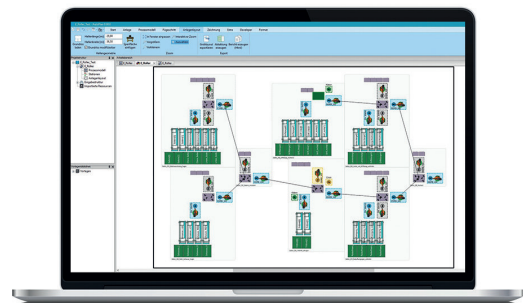
- Automatically generating production line layout and balancing
- Quick cost estimation
- Customizable rule set and resource library
- Minimum resource cost at a given cycle time (SALBP optimization)
- Simulation of the plant behavior

### Advantages

- Rough planning with just a few clicks
- Comparison of planning alternatives
- Quick and easy re-planning
- Reduced planning effort
- Decreased costs



AutoPlan Process Model



AutoPlan Layout