



# InfoCABLE® MODELLING OF IT INFRASTRUCTURES

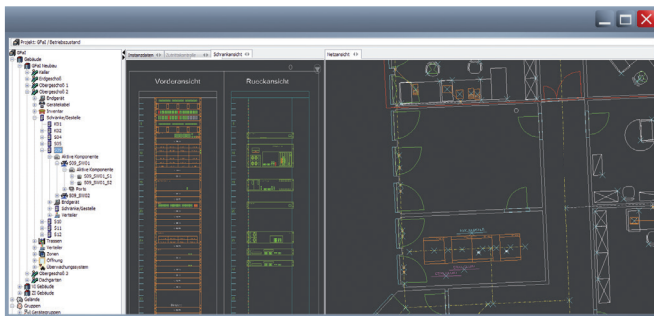
## THE SOLUTION

With InfoCABLE®, GFaI provides a CAFM system for the planning, administration and documentation of communication networks. The main system is based on a close link between CAD and database.

This coupling allows simple importing of all floor plans and enables a true-to-scale modelling of all device locations and cable routes. Additionally, InfoCABLE® data can also be accessed via intranet, with no need of external CAD software for network visualisation.

InfoCABLE® is more than a cable management system. Moreover, it supports the complete documentation of primary, secondary and tertiary networks. Thus, mapping of all active and passive components of the network as well as their linkages is straight forward.

From port level to pin level, InfoCABLE® also allows monitoring and managing all cable routes down to the finest detail.



InfoCABLE® AlphaSearcher: access via intranet

Port	FK	Patchpanel	Kabel	Dose	Workstation / Switch	Raum	Mitarbeiter	Signierung
22	PK	S05_PP_D_14	TP_00218	DO_S05_D14		R.201 (15.24)	Biro Netzwerk	SWG_129
23	PK	S05_PP_E_04	TP_00032	DO_S05_E04		Akt CAFM		SWG_DAT_Ber
24								
25								
26	PK	S05_PP_F_08	TP_00064	DO_S05_F08	Intz-RJ45	Akt CAFM		SWG_DAT_Intz
27								
28								
29	PK	S05_PP_D_16	TP_00220	DO_S05_D16		R.201 (15.24)	Stanz Netzwerk	SWG_110
30	PK	S05_PP_D_17	TP_00021	DO_S05_D17		Akt CAFM		SWG_DAT_Ipg4

Flexible report design for a quicker data analysis

## BENEFITS

- Centralised management of network documentation
- Fast and efficient data maintenance
- Secure and user specific provision of data
- Fast localisation of network errors
- Monitoring of maintenance cycles
- Initial situation and constraints will be clear before executing modification, modernisation and moves in your network.
- Reduced planning periods
- Optimum network connections
- Planning based on current data with live documentation
- Collision detection of current operating status ahead of planning release
- Automatic creation of BOM (bill of material) and work order

## THE InfoCABLE® SERVICE

In addition to continual development work, software maintenance and distribution, we offer the following InfoCABLE® services:

- Development of customer specific reports, add-on modules and interfaces
- Technical assistance with the integration of InfoCABLE® into existing software
- Establishment of procedures to ensure an automated data import from legacy systems or inventory documentation
- Supporting the capture of interactive data

Moreover, we offer comprehensive software training and workshops as well as customised application strategies that meet different needs of our clients.

### CONTACT

**SILVIA SCHWOCHOW**  
Tel.: +49 30 814563-300  
eMail: schwochow@gfai.de

**JÜRGEN TROTZ**  
Tel.: +49 30 814563-616  
eMail: trotz@gfai.de



### InfoCABLE® SYSTEM SOLUTION

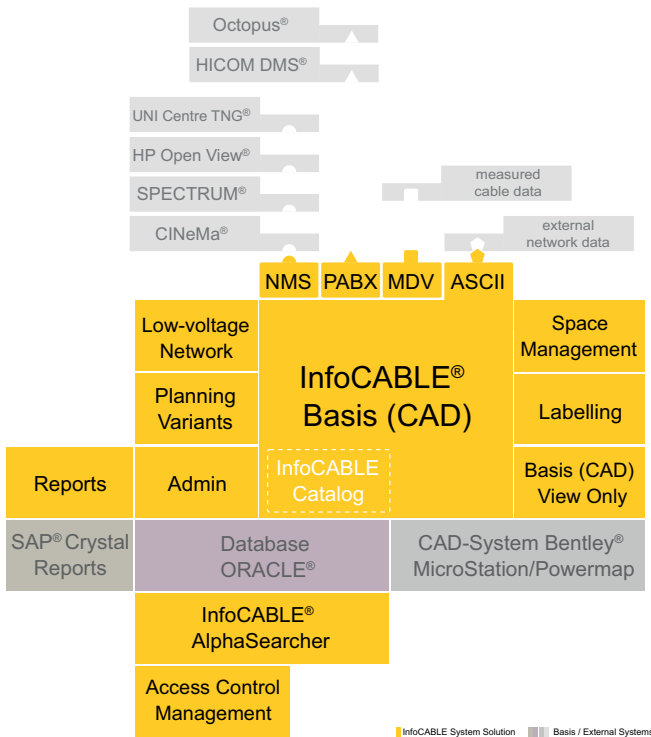
InfoCABLE® is a modular software package, enabling our customers to create individual system solutions.

### InfoCABLE® MODULES

The foundation of the software forms the **Basis** module. It gives access to project administration, type catalog and standard ASCII interface for data import from external systems. It also includes all functions for modelling the network and collecting information.

### MORE InfoCABLE® ADD-ON MODULES:

- The module **Space Management** automatically connects all relevant area information with network components and updates the network layout accordingly to any enforced changes.
- The module **Planning Variants** evaluates planning alternatives in case of network expansion, while maintaining documentation of the current network (live-operation). Before making any final modification, the system runs an automated collision detection by comparing the current and the planning state. Also, planning and plant documentation can be combined.
- The **Labelling** module gives access to the fully automated creation of labelled network plans, whose content and visual appearance can be adapted for individual or specific purpose.
- The module **Reports** gives an overview of reports that are based on the user-specific database analysis.
- The **Administration** module supports the import and export of InfoCABLE® catalogs and external subnetworks.
- The module **Low-Voltage Network** includes an extension of the catalog for components of low-voltage networks and specific plausibility checks in electrical installations. Power consumptions are calculated, including buffered supplies and passive distribution networks, and circuit overloads are detected.
- The **NMS** interface provides a direct exchange of information about any network components with active network management systems.
- The **Digital PABX** interface easily accesses data from telephone systems, e.g. personal data, system data and terminal device data.
- The interface **Measurement Data** provides a data interchange tool among measured data management systems, ensuring a device-independent administration of measured cable data.



InfoCABLE® Module Structure

The InfoCABLE **Alpha Searcher** allows users scanning the entire online database, editing module data and updating patch connections. The underlying graphic engine provides true-to-scale visualisation of the network infrastructure.

The module **Access Control Management** provides an effective management tool for controlling locking plans and access authorisation for all common mechanical or electronic locking systems of the premises.

**On request, we offer to develop individual modules or add-ons.**

**CONTACT**

**SILVIA SCHWOCHOW**

Tel.: +49 30 814563-300

eMail: schwochow@gfai.de

**JÜRGEN TROTZ**

Tel.: +49 30 814563-616

eMail: trotz@gfai.de